

WinTV-MiniStick-HD WinTV-NOVA-T-HD WinTV-NOVA-T-Stick

Quick Installation Guide

Hauppauge Digital Asia
1093 LOWER DELTA ROAD # 04-05 • TIONG BAHRU INDUSTRIAL ESTATE • SINGAPORE 169204
Tech Support tel : + 65 62764412 • Tel: +65 62769163 • Fax : +65 62769167
Tech Support : support@hauppauge.com.sg
www.hauppauge.com.sg

Contents of the WinTV MiniStick package

A WinTV-MiniStick or WinTV-NOVA-T-Stick



B USB extension cable



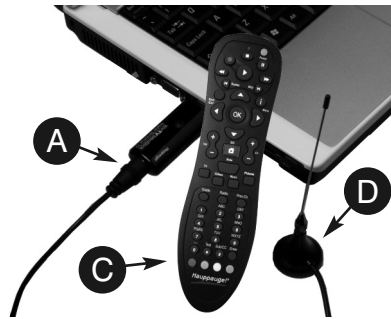
C Remote control



D Portable digital TV antenna



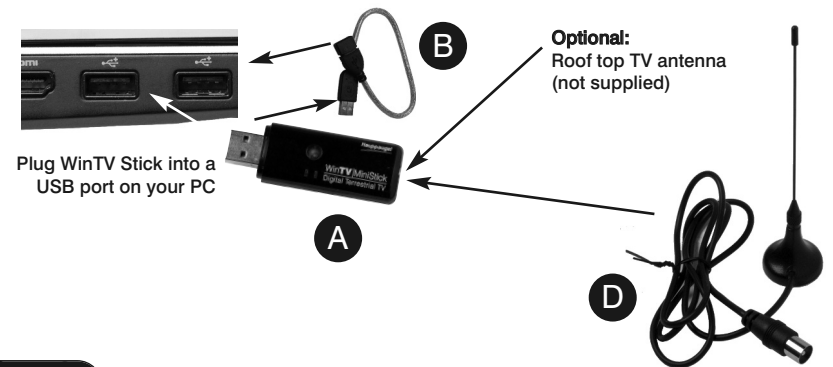
E



Installation Overview

Step 1

Install the WinTV MiniStick ('A') in an unused USB 2.0 slot on your PC.
Plug in the supplied portable digital TV antenna ('D').



Step 2

Turn on your Windows Vista PC.
Insert the CD into the CD drive & follow on screen instructions.



Step 3 and 4

Run WinTV v7.

You will need to configure the TV tuner and then scan for TV channels as part of the initial setup.

Then you can start watching and recording live TV!

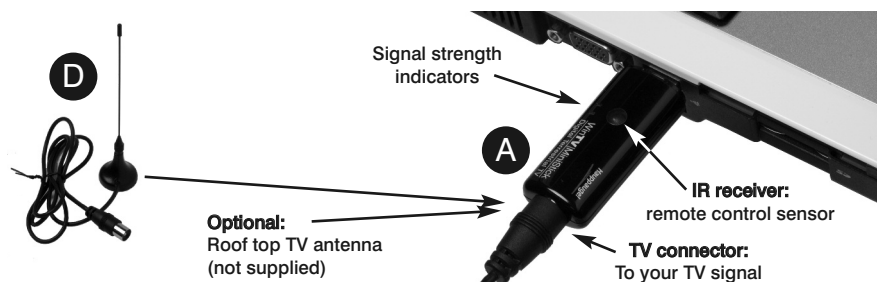


Step 1. Install the WinTV Stick in your laptop or PC

- Locate a free **USB 2.0 port** (normally located at the side or back on the computer). Due to power and bandwidth requirements, we do not recommend connecting the unit into a USB Hub.
- Plug the **WinTV Stick ('A')** into the **USB port**. You can use the **USB extender cable ('B')** to locate the WinTV device away from the USB slot.
- Connect the supplied **portable digital TV antenna ('D')** or a rooftop antenna to the **TV connector** on WinTV Stick.

Note: Instead of the portable digital TV antenna, you can plug in an external rooftop antenna (recommended if you have one available).

Note: If the computer is on while plugging in the device you may see the new hardware wizard pop up, please **Cancel** this wizard.



Step 2. Install the WinTV Stick driver and applications

Turn on your Windows XP or Vista based PC or laptop, and boot into Windows.

If a 'Found New Hardware' wizard appears please cancel it and allow windows to load fully before proceeding.

Insert the **WinTV Installation CD-ROM** in your PC's CD-ROM drive.

Note: if the CD does not autorun navigate to the CD and run the 'Setup' file.

"Hauppauge WinTV Installation CD" window will appear on the screen.

Click the button labeled: **Step 1: Install drivers.**

A blue screen will open and begin installing the drivers for your WinTV.

Once the drivers have installed, click on the **Finish** bar to exit.

Click the button labeled **Step 2: Install WinTV**

The setup application will then open and begin automatically installing the WinTV application components.

Once complete, click **OK** then **Exit**.

Note: the latest driver updates are available at: www.hauppauge.co.uk/support



Step 3. Run WinTV v7 and scan for TV channels

After the installation is complete, you will see a WinTV v7 icon on your Windows desktop. Double click on it.

When you run WinTV for the first time, the **WinTV Device Setup Wizard** appears.

Select **Digital DVB-T** and click **Next**.

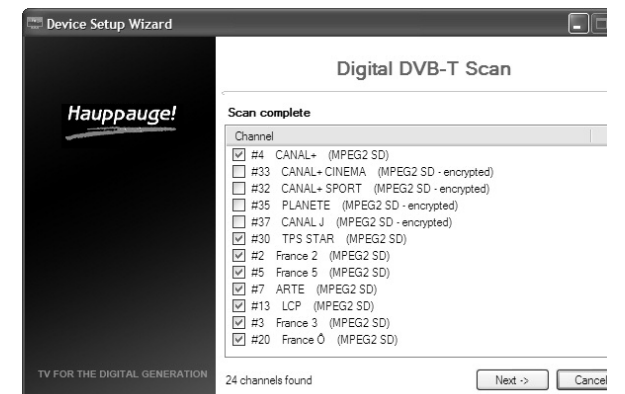
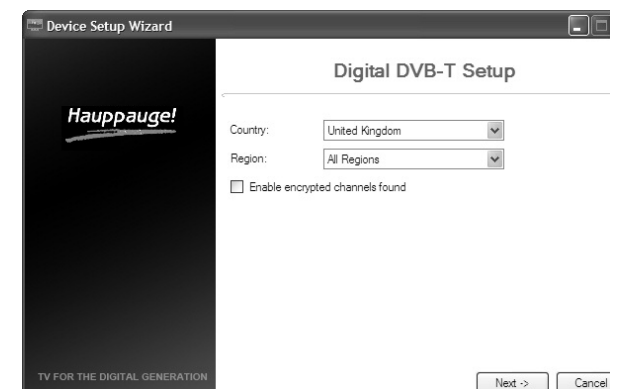
Select your **Country** and **Region** then click **Next** to start the scan.

As TV channels are found, they will appear in the Channel box.

Note: If you do not receive any digital TV channels, use a stronger antenna (a rooftop antenna is recommended for best reception) or try to find a better location for the portable antenna. You can use the Hauppauge SignalMonitor tool to help diagnose signal reception problems.

When finished click **Next**.

The WinTV application will now start and display the first TV channel in the list.



Step 4. Using WinTV v7

WinTV v7 is a powerful and intuitive TV application. There are many features in WinTV v7, including live TV, recording and pausing live TV, a TV scheduler and a video player where you can playback recordings in a window or full screen.

Note: If there is no WinTV plugged into your PC or laptop when you open the WinTV v7 application, WinTV v7 will start in **Playback recorded TV** mode. In this mode, you can playback to your PC screen any TV programmes which have been previously recorded.

You can plug your WinTV Stick into your PC while WinTV v7 is open. You will need to wait about 20 seconds for the WinTV TV tuner to be recognized by Windows.

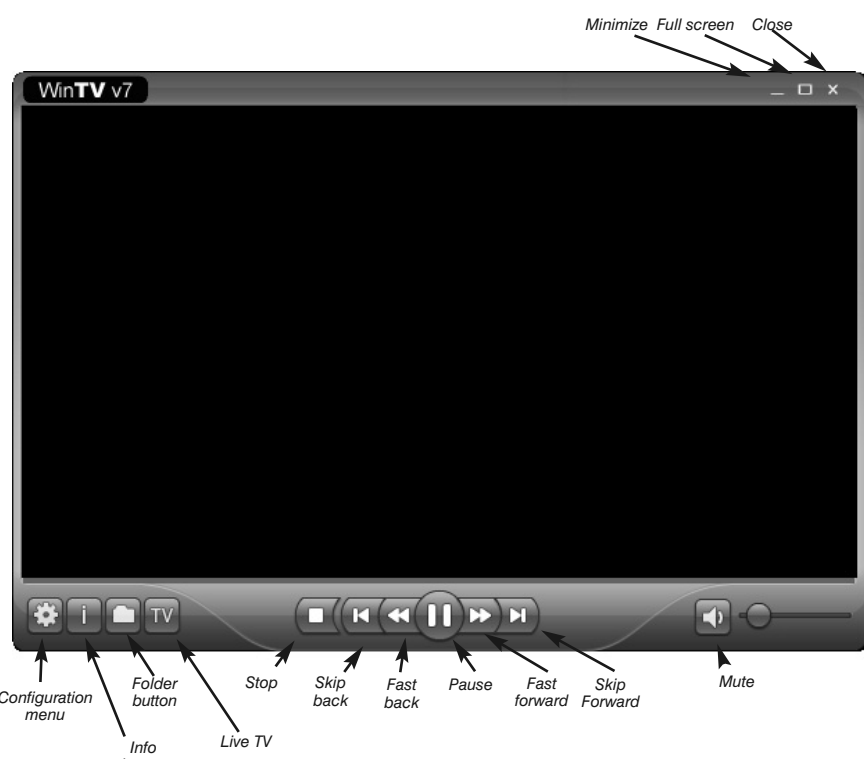
TV watching

To watch live TV, click on the **TV button**. You can also select Live TV from the **Context Menu** (a right click in the TV window brings up the Context menu), or press **ALT T** on the keyboard.

Note: You can plug your WinTV product while WinTV v7 is open, and after 20 seconds, click to the TV button to start watching TV.

Playback Recorded TV

To open a file for playback, click on the **Folder button** or select **Open File** from the **Context Menu**. The file will then be played back in the WinTV window.



Watch TV

Changing channels

To change TV channels, click the **Channel Up** or **Channel Down** buttons on the WinTV application, or press the **+** or **-** key on the keyboard. You can also type a **channel number** (for example: 15) followed by the **<Enter>** key.

You can choose a TV channel from the complete list of available channels by opening the **Context menu** (right clicking into the **TV window**) and select **Find Channel**, or press **Ctrl + L** to open the channel list. You can now enter a channel name (or a part of it) to display only those channels which match the name. Select a channel from the list with your mouse.

OSD button

Clicking the **OSD button** will bring up the **On Screen Display** with **Now/Next** TV program guide information. You will see information on the current TV program (**'Now'**) and information on the next program to be broadcast on the channel (**'Next'**).

Pause TV

WinTV automatically generate a **Pause file** after changing channels. You can **Skip Back** at anytime or click the **Pause button** to pause the TV programme.

While watching TV, the following controls can be used:

- Press the **Skip Back** button to skip back 1minute.
- Press the **Rewind button** to skip back 10 seconds.
- Press the **Fast Forward** button to skip forward 30 seconds.
- Press the **Skip Forward** button to skip forward 1 minute.

Note: Changing the TV channel will reinitialize the pause buffer. However, you can find the last pause file (in a .TS Transport Stream format) in the Pause directory (by default: C:\temp\Pause Buffer)

Record TV



Click the Record button on the WinTV application to start recording current TV programme. WinTV will automatically generate a file name and start recording your TV program in original Digital Quality. The format of the file name is [Programme title]_[Date]_[Time].ts

While recording TV, you will not be able to change TV channels. However, you can still Pause/Skip Forward/Skip Back. Also, the recording for digital TV is stored in a digital *.ts Transport Stream format.

Stop

Clicking the Stop button will stop live TV, or terminate a manual recording. Click the TV button to start watching TV again.

The Context Menu

Right click inside the TV window to display the Context Menu. The Context menu options are:

View Mode: Normal view, No title and Full screen are available. In **Normal view**, all button and controls are visible. In **No title mode only** the TV image is displayed. **Full screen mode** will fill your screen with the TV picture. You can also switch between these modes by **double clicking inside the TV window**, or by pressing **CTRL W** on the keyboard.

Note: The application size in **No title mode** and **Normal view** can be stretched and shrunk independently and will retain their settings when you change mode.

Aspect Ratio: Selecting **Auto** will maintain the correct aspect ratio (4:3 or 16:9) of the TV image (recommended). Selecting **Fill** will make the TV image always fill out the complete video window, regardless of the dimension of the application window.

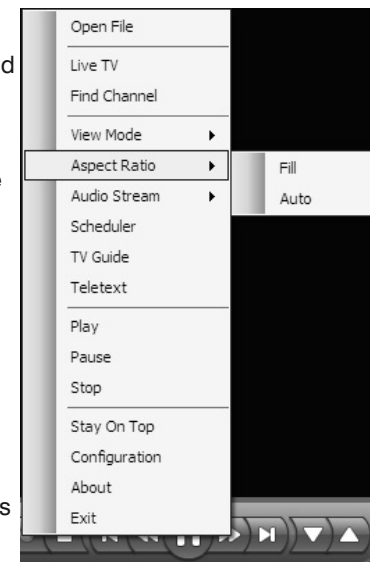
Audio Stream: If the current broadcast offers more than one audio language, you can select a different Audio Stream here.

Scheduler: The Scheduler allows you to record a TV program at a certain date and time on a specified channel.

The Scheduler lists all scheduled recordings added by the TV Guide as well as any manual recordings that have been set. From here you can manually Add or Delete these schedule entries. The Cancel button allows you to terminate a currently recording program.

To schedule a recording, click on the **Add button**. You will need to set the following information:

- **Name:** The name of your recording task (this does not specify the filename of the recording).
- **Channel selection:** Choose the channel to record.
- **Start Time:** Set to the desired start time.
- **Program Duration:** The length of the recording, using the arrows (steps of 30 minutes) or directly by the keyboard.



- **Recurrence:** You can choose to have the recording repeat Once, Daily or Weekly. If you select the Weekly option, select the day you wish have the show recorded on.

- **Start Date:** The default is the current date.

- **Date to End:** If you have selected the Every Day or Weekly option, you can specify the date at which to stop this task.

Once all the information is set, click **OK** to confirm. You can add more events by clicking **Add** after each event is set. When you are finished, click **OK** to exit the scheduler.

Note: The WinTV application does not have to be running for a Scheduled Recording to work, but your PC will need to be either turned on, in Standby or in Hibernate Mode. All scheduled recordings are performed in the background by a task called "WinTV7Rec.exe". If a recording is started while you are watching live TV, live TV is stopped and WinTV automatically starts playback of the current recording.

TV Guide (EPG): Certain digital DVB-T channels, along with their TV programs, contain a TV channel guide. This guide is a listing of the programs being shown for the next 7 days, and includes the TV program name, program start times and length.

Select a program with your mouse to see further details and a description of the program. If you would like to record the currently selected TV programme, simply click the Record on the right of the window, click OK to confirm and at the correct time your TV show will be recorded on your PC.

"Always On Top" Mode: The WinTV application window will remain in view over any other applications even if it is not selected. To turn on, select **Stay On Top** (or ALT + O). To turn off, select this option again.

Teletext: Displays teletext pages on top of the TV image if supported.

Configuration button

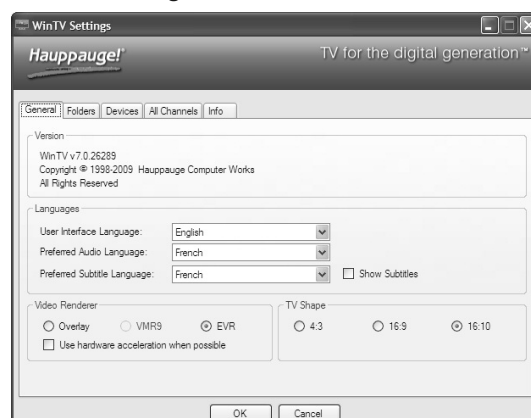
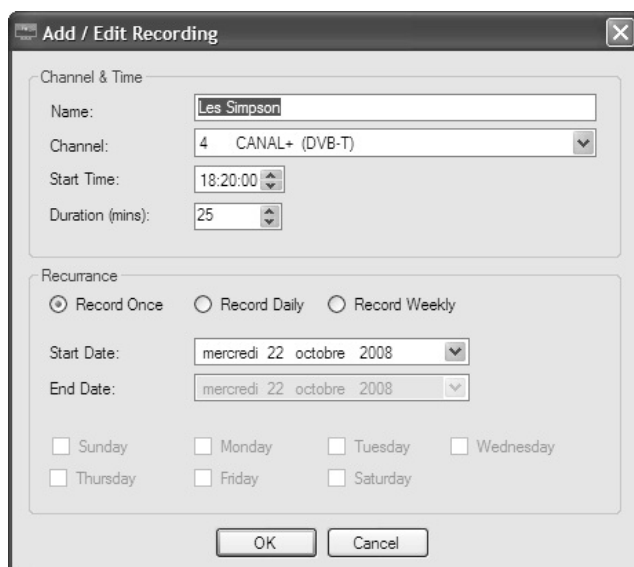
Click the **Configuration button** to open the WinTV settings window.

General: select the language and the preferred Audio and subtitle languages.

You can also specify the video renderer to be used and the TV shape.

Folders: Specify where the movie record and pause files will be stored.

Devices: To configure a Hauppauge TV tuner, first select the device you wish to configure from the list, then click on **Wizard** to scan for new channels, or **Settings** to scan or organize the channel list.



All Channels: you can enable or disable channels with the select box in the first column. The **right click** context menu allows you to select all channels, to delete the selected channel(s), to watch the selected channel or to display details about the channel.

Details menu: displays some information about a channel and allows you to re-order channels by changing the Preset number. If you change the Preset in the Details dialog to an occupied number, that channel will be placed at the end of the list.

Troubleshooting

Some notes on system compatibility

Decoding high definition HD TV is very CPU intensive. With Windows® Vista, you can use WinTV v7 to receive HDTV with a 2.0 GHz processor when combined with an nVidia 8 Series and above or ATI 10 Series and above Graphics Card. To do this, select "Use hardware acceleration when possible". If your graphic card is not capable of hardware acceleration you will need a Core Duo, 2.8 GHz Intel Pentium 4 or equivalent for HDTV (1.0 GHz for digital TV). In some cases, either a faster processor or more graphics memory might be required. Slow or jerky video and a noisy TV picture indicate system performance problems.

Jerky video with live digital TV

Jerky or distorted video can be caused by two things in your PC or laptop:

- A slow CPU or graphics system which cannot decode the digital signal fast enough
- Poor digital TV reception from either an inadequate aerial or low signal reception in your area

Many times, improving the performance of the graphics display will fix the jerky video display of digital TV. Here are some tips on improving graphics performance:

- **Use the latest graphics driver:** Graphics drivers are often 'tweaked' to improve performance, especially the built-in graphics on laptops. Check your graphics card manufacturer's website to download the latest graphics driver for your computer. For Dell computers, check the Dell website for the latest graphics driver.

Only some channels are found during channel scan

If you are only receiving some known TV channels when scanning, it may mean your TV antenna is not adequate to pick up the channel. You will need either an antenna signal booster (a Radio Shack antenna amplifier will work) or a high gain antenna.

Uninstalling the WinTV driver and applications

Run the **hwcliclear.exe** from the installation CD. Select **OK**. A black screen will briefly appear and once it has disappeared the software will have been removed. If you now restart the computer you reinstall the WinTV driver in Step 1 above.

FCC Statement FCC ID: H90WINTV CE Statement: This equipment has been tested and complies with EN 55013, EN 55020 and IEC 801-3 part 3 standards. **CAUTION:** Changes or modifications not expressly approved by the party responsible for compliance to the FCC Rules could void the user's authority to operate the equipment. **Supplementary Television Broadcasting Receiving Apparatus** - Appareils supplémentaires de réception de télévision, Canada. Nordic note: Ma kun tilkoples kabel-TV nett via galvanisk isolator

Waste Electrical and Electronic Equipment (WEEE): The device may not be disposed of with household rubbish. This appliance is labeled in accordance with European Directive 2002/96/EG concerning used electrical and electronic appliances (Waste Electrical and Electronic Equipment - WEEE). The guideline determines the framework for the return and recycling of used appliances as applicable throughout the EU. To return your used device, please use the return and collection systems available to you.