

# WinTV-HVR-1265 and WinTV-HVR-1265 MC-Kits

## Quick Installation Guide

QI-WINTV-HVR1265-V5.1 · 8/19/2014 © Hauppauge Computer Works, Inc. 2009 - 2014

Hauppauge Computer Works, Inc.  
91 Cabot Court  
Hauppauge, NY 11788

Telephone: 631-434-1600  
Fax: 631-434-3198  
Tech Support: 631-434-3197  
techsupport@hauppauge.com

Sales: sales@hauppauge.com Web site: www.hauppauge.com

### 1. Contents of the WinTV-HVR-1265 package

- WinTV-HVR-1265 PCI e board with 1/2 or full height bracket

For the WinTV-HVR-1265 with WinTV application:

- WinTV v7 Installation CD-ROM with WinTV v7 application with SoftPVR™ and TV Scheduler
- Hauppauge remote control transmitter
- Remote control receiver cable

For Windows Media Center kits, you will find:

- WinTV-HVR Windows Driver CD-ROM
- Media Center Remote Control transmitter and two AA batteries
- Media Center Remote control receiver/blaster
- IR transmitter cable (blaster cable)
- USB cable for the Media Center remote control receiver/blaster box



### 2. What is ATSC digital TV?

**ATSC digital TV is over-the-air digital TV for North America.** ATSC digital TV typically requires an antenna for reception, and is currently broadcast in 200 cities, with over 1500 TV stations. ATSC digital TV is transmitted in several resolutions, from “standard definition” up to high definition which has about 16 times the resolution of normal cable TV. In any resolution, ATSC digital TV gives sharper pictures than analog cable TV and near CD quality sound.

**Clear QAM TV channels are digital cable TV channels which are broadcast “in the clear”.** These digital cable TV channels are broadcast in various resolutions, from standard definition up to high definition.

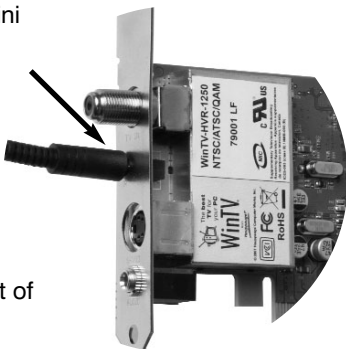
WinTV-HVR-1265 has a built-in tuner for analog cable TV, digital ATSC and digital clear QAM TV. To receive ATSC, you will need an antenna. To receive digital clear QAM or analog cable TV, you will need a cable TV connection.

**Left/right audio input:** Stereo audio input using 1/8” mini stereo jack, from the audio output of your source.

#### Connecting the remote control receiver cable

Plug the **remote control receiver cable** into the **Remote control receiver connector** on the WinTV-HVR-1265.

Position the round receiver sensor (at the end of the remote control receiver cable) where it can be “seen” by the remote control transmitter. This is normally at the front of your PC.



### 5. Installing the WinTV driver and applications

Boot your Windows PC (Windows 7, 8, 8.1, Vista or Windows XP).

**New:** If a 'Found New Hardware' wizard appears, please cancel it and allow windows to load fully before proceeding.

Insert the WinTV Installation CD-ROM in your PC's CD-ROM drive.

**Note:** if the CD does not autorun, navigate to the CD and run the 'Setup.exe' file.

“Hauppauge WinTV Installation CD” window will appear on the screen.

#### Install the WinTV driver

Click **Step 1: Install drivers.**

A blue screen will open and begin installing the drivers for your WinTV.

Once the drivers have installed, click on the **Finish** bar to exit.

#### Install the WinTV applications

Click **Step 2: Install WinTV**

The setup application will then open and begin automatically installing the WinTV application components.

Once complete, click **OK** then **Exit**.

**Note:** the latest driver updates are available at: [http://www.hauppauge.com/site/support/support\\_hvr1250.html](http://www.hauppauge.com/site/support/support_hvr1250.html)



### 6. Running WinTV for the first time

To run the WinTV v7 application for watching TV, recording videos and playing them back on your PC, double click on the WinTV icon on your Windows desk top.



WinTV-HVR uses your PC or laptop's CPU for displaying TV programs on your PC screen. The decoding of high definition ATSC is very processor intensive, and the smoothness of high definition TV programs depends upon how fast your PC or laptop system is. Other PC activities that consume CPU resources might affect the display of ATSC digital TV. Slow video, jerky video and momentary pausing of video are all results of a CPU which is temporarily being used by other activities.

**For the best ATSC digital TV reception,** a roof top ‘Wideband’ or ‘High gain’ antenna is recommended. In the U.S., a good ATSC digital antenna selector can be found at **TitanTV.com** under **Resources**.

**Note:** The WinTV-HVR-1265 cannot receive digital satellite TV unless it is connected to a satellite TV set top box.

### 3. Installing the WinTV-HVR-1265 board

To install, switch off the computer and remove the computer cover.

**Note:** Your PC could be damaged by electrostatic discharge. Avoid this by contacting the earthed chassis of your PC, before you open it or touch the pci card.

- Locate a free PCIe slot. Unscrew and remove the metacover plate which covers the back of the empty slot.
- Plug the WinTV-HVR-1265 board into the PCIe slot (a X1 or X16 slot will work), and screw the WinTV-HVR-1265 metal cover plate to the PC.
- Replace the computer cover.

### 4. Connecting the cables

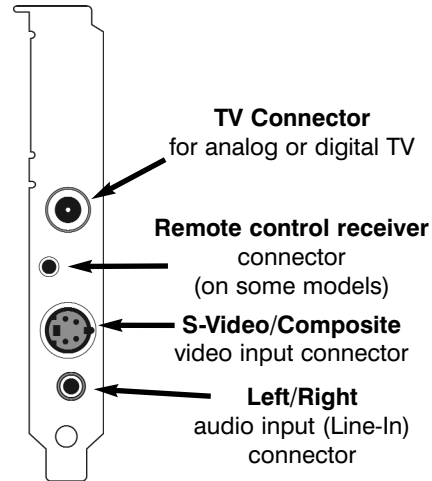
**TV connector:** for either cable TV for analog and clear QAM digital, or a TV antenna for ATSC TV.

**Note:** clear QAM digital cable TV is only available through some cable TV operators. Contact your local cable TV company to see if they support clear QAM digital cable TV. To watch clear QAM digital cable TV, you need to be using Windows Media Center in Windows 7/8 or WinTV v7.

**Remote control receiver connector:** to the Hauppauge Remote Control receiver cable (on some models).

**If you are using an external audio/video source like a satellite or cable TV set top box ...** then you will need to connect the **S-Video input connector** or **Composite video input connector** for video and the **Audio input (Line-In)** for the sound.

**S-Video/Composite:** Video input connector. For either S-Video or composite (composite video requires the S-Video to composite adapter).



#### Device Setup Wizard

When you run WinTV for the first time, the WinTV Device Setup Wizard appears. Select the TV source that you are using. On some model WinTVs, you have multiple tuners and therefore you can select multiple sources. For the WinTV-HVR-1265, you can choose either ATSC or Digital QAM and Analog TV. You cannot choose both Digital ATSC and Digital QAM.

**Note:** If you'd like to use the A/V inputs, please select **External inputs (Composite/S-Video)**.

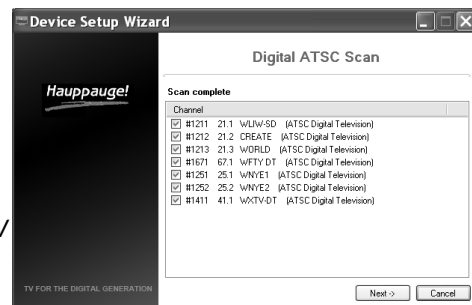
#### ATSC digital over-the-air TV

Select **Digital ATSC** and click **Next**. In the ATSC Setup menu, click **Next**. You will see the **Digital ATSC Scan** scanning for digital over-the-air channels.

The digital TV scanning process will scan from channels 2 to 51. As TV channels are found, they will appear in the Channel box.

When complete, click **Next / Next** and **OK**.

**Note:** if you do not receive any ATSC digital TV channels, an antenna signal booster might be needed. After adding a signal booster, see below for instructions on rescanning and the Troubleshooting section for information on choosing an antenna.



#### Clear QAM Digital Cable TV

Clear QAM digital cable TV channels are those TV channels broadcast on a digital cable network which are unencrypted (“free to view”). If you have a cable operator who transmits clear QAM digital TV programs, chose Digital QAM and Next.

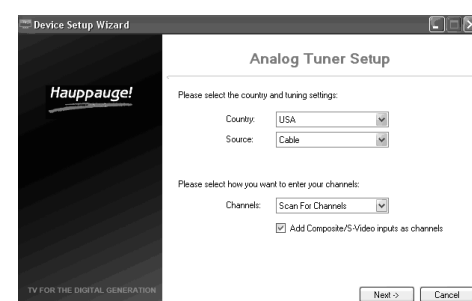
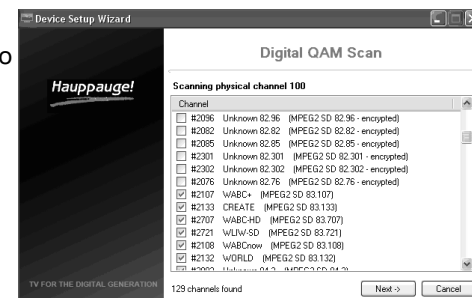
Encrypted channels are automatically not selected. The resulting channels in the list might be both standard and high definition channels.

**Note:** Windows Media Center requires Windows 8 or 7 to support QAM TV channels. You can also use the Hauppauge WinTV v7 application for QAM TV reception.

#### Analog cable TV

Select your **Country** and **TV Source** from the drop down list. To automatically scan for channels, click **Next** to continue.

Click the **Scan** button and WinTV will



automatically scan for analog channels. The scanning process takes about 10 minutes.

### External audio/video sources

You can bring video into the WinTV from an external audio/video source such as a cable TV or satellite set top box.

In the **Device Setup Wizard**, select **External Inputs** and click **Next**.

You will be presented with the option to add a **Composite** and an **S-Video** Input. Please select your country (if not correct) and click **Next**.

If you wish to connect a source not normally designed for operation in your country, you can configure the Video Format manually from the drop down list. Change the value from "AUTO".

**Note:** Pal BGHDK is the commonly used format in Europe. NTSC is the broadcast format used in North America.

### Rescanning TV channels

If you want to rescan for TV channels, click the **Setup** menu (the gear button in the lower left corner of WinTV v7).

Then click on the **Devices** tab. Choose your WinTV device by clicking on it, then click **Tuner setup**. Choose the TV format you want to scan, then click **Next**. Click **Next** and a new scan will be started. When the scan is complete, click **Next / Next** and **OK**.

## Using the WinTV v7 application

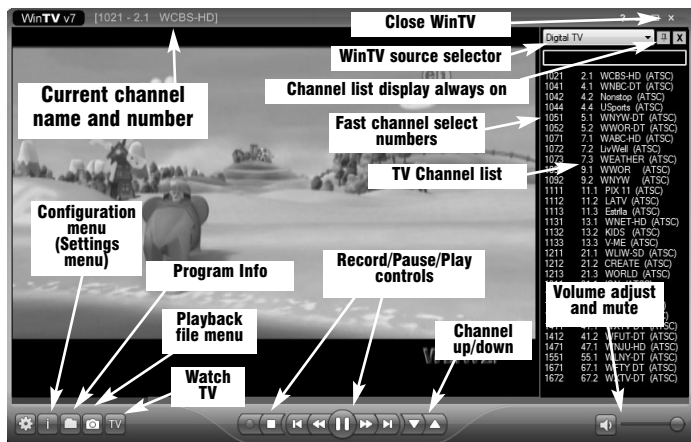
To watch TV, click the **Watch TV** button.

To see the **TV Channel list**, click your **right mouse button** in the TV window to display the **Options menu**. Select **Find Channel**. You will see the channel list.

To display the channel list all the time, while the channel list is displayed, click the **Channel list display always on** button.

### Options menu

The **Options menu** is the main menu where you can select channels, turn on closed captions, open the



The recorded video file is saved in the directory set in **Recordings directory**. The default directory is **MyVideos**. To change this directory, click the **Settings** button and then the **Folders** tab. Every time you record a file, a new file is automatically created. The file will be formatted as (ChannelNumber)\_(ChannelName)YearMonthDay\_Time.

For digital TV programs, the quality level recorded is the same as it is transmitted by the TV station. For example, if the TV station is transmitting a high-definition program, WinTV will record the program in high-definition.

Closed captions, parental control information and SAP audio is recorded with digital TV programs.

For analog cable TV using the built-in hardware MPEG-2 encoder, the quality of the video recording is set to 6Mbps/sec. This will be a configurable setting in a future version of WinTV v7.

### If you want to pause a TV show you are watching:

- Click the **Pause** button. Your TV video will stop and the Time counter will start counting.
- To start the video from where you paused, click the **Play** button
- To rewind the video to the beginning, click the **Skip to the beginning** button. If your video was paused, click the **Play** button.
- To rewind the video 1 minute, click the **Skip back 1 minute** button. If your video was paused, click the **Play** button.

The Delay counter displays how much time you are behind the live video. For example, if the delay counter says 00:01:23, then the video window is showing video 1 minute and 23 seconds behind live video.

### Selecting FM radio programs

On those WinTV products which support FM radio, if you have scanned for FM radio stations in the section entitled "Using WinTV for the first time" you can change the WinTV v7 application to FM by clicking FM radio in the Source selector, found in the upper right hand corner of the WinTV application.



### Configuration menu

The WinTV v7 Configuration menu is accessed by clicking the gear button in the lower left hand corner of WinTV v7.



TV Scheduler and many other of the most important TV control functions.

To bring up the Options Menu, click your **right mouse button** **once** in the TV window.

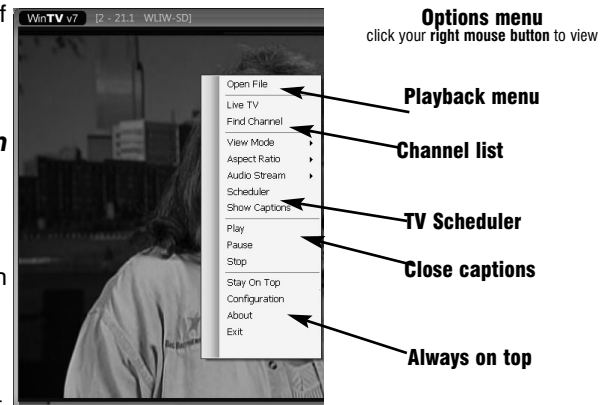
To see the channel list, click on **Find channel**. You will see the list of channels which have been scanned.

To show the Channel menu as part of the TV window, click the **Channel list** always on icon at the top of the channel list.

To turn on Closed captions, click on **Show Captions**.

To manually schedule a TV recording, or to see which programs have been scheduled, click on **Scheduler**.

To turn on the **Always on Top** mode, click on **Stay on Top**.



### Watch, Pause and Record TV

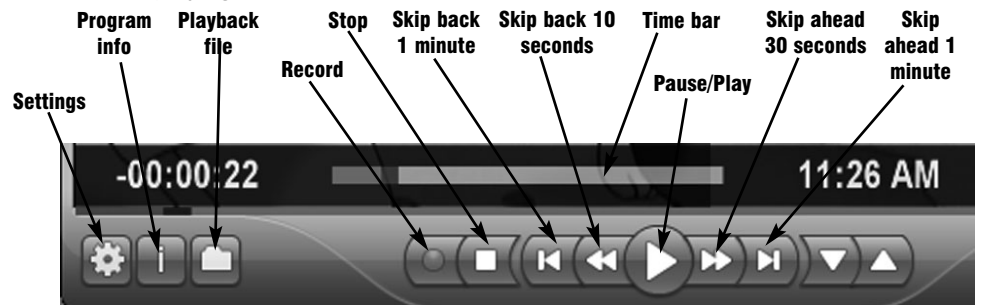
WinTV v7 is always recording video to your PC's hard drive while TV is being displayed. In this way, you can immediately skip back and replay the TV program you are watching.

Clicking on the **Pause button** will cause the video to pause, while clicking the **Record button** will cause the current TV program to be recorded to hard disk.

### Recording your TV shows

If you want to record a TV show you are watching:

- Click the **Record button**. The recorded file name will popup on the video for a few seconds as the recording starts.
- When you are finished recording, click the **Stop button**.
- Click the **Playback file** button and select the last file recorded to play the video you just recorded
- To play a video you recorded earlier, click the **Playback File** button and then move your mouse and click once on the video you want to play. Click **Open** and the file will start playing.



**General tab:** you can set the Video Renderer which allows WinTV v7 to display video with a wide range of graphics systems.

**Devices tab:** this is where you can select your Hauppauge TV tuner, set up the tuner, re-scan for TV channels and set up the TV sources.

**Parental control tab:** is where you can set the Parental Control level.

**Advanced options:** you can set options such as Convert TV recordings to .MPG file type and Game mode here.

### TV Scheduler

WinTV v7's built-in TV Scheduler allows you to schedule the recording of TV shows. Once a record event is set, WinTV v7 can be closed and the WinTV application will "wake up" at the desired time and tuned to the desired channel.

The TV Scheduler can be found in the **WinTV v7 Options** menu. **Right click your mouse button in the TV window to see the Options menu.**

Click **Scheduler**. To set up an event for timed watching or recording, click the **Add button**.

The items that need to be set for each event are:

- **Name:** you can add a name to the recording. If you do not enter a name, the name will be in the channel/date format.
- **Channel:** chose one of your scanned channels.
- **Start time:** set to the desired start time. Click on the hour to set the hour, the minute to set the minute. Note: It takes about 15 seconds to launch the WinTV and start recording.
- **Duration:** number of minutes in the recorded program.
- **Recurrence:** one time, daily, weekly. Note: If you set for Record Weekly, you must also specify the Day of the Week for the recording.
- **Date to Begin Program:** today's date is the default. Change this if you want to schedule on another date.
- **Source selection:** leave set at WinTV to bring up the WinTV at the requested time and on the requested channel.

Once these are set, click **OK**. You can add more recordings, clicking **OK** after each event is set.

When you are finished click **Close**. The WinTV program does not have to be running for the Scheduler to work. If WinTV is not running, it takes about 15 seconds to start

