

WinTV-soloHD WinTV-dualHD

Quick Installation Guide

Hauppauge Computer Works, Ltd
Crown House, Home Gardens, Dartford,
Kent DA1 1DZ,
United Kingdom
tel: (+44) 203 405 1717
Support: www.hauppauge.co.uk/contact

www.hauppauge.co.uk

Hauppauge Digital Asia Pte Ltd
1093 Lower Delta Road #04-05
Tiong Bahru Industrial Estate
Singapore 169204
tel: +65 62769163
fax: +65 62769167
email: sales@hauppauge.com.sg
tech support: support@hauppauge.com.sg
www.hauppauge.com.sg

Package Contents

A WinTV-soloHD or
WinTV-dualHD Stick



B USB Extension Cable



C WinTV Installation CD ROM
with serial number* on the sleeve



D DVB-T Antenna
(only some models)



E Remote Control
with one CR2016 battery
(only some models)



For the exact contents please refer to the packaging description on the box.

* Please keep the serial number in a safe place. It will be required for future installations.

Note: It is recommended to check the support website to make sure you are installing the latest WinTV 8 software version; see Further Information on page 8.

1

Step 1: Installing the WinTV Stick

1. Turn on your PC or Laptop and wait until Windows has completely started.
2. Plug the WinTV Stick into a USB 2.0 or USB 3.0 port using the supplied USB extension cable. This is to reduce mechanical load to the USB port, and also adjacent USB ports can still be used.

Note: Due to power and bandwidth requirements, we do not recommend connecting the unit into an external USB hub.

Step 2: Connecting the TV Signal

Cable TV

On a cable TV feed, the WinTV-soloHD / dualHD can receive digital TV and radio programs (DVB-C).

Connect the **TV** output on the cable TV socket to the **TV input** on the WinTV stick, using a high quality antenna cable (not supplied).

Digital Terrestrial TV

The WinTV-soloHD / dualHD can receive DVB-T and DVB-T2 broadcasts from an antenna. Connect the supplied antenna, or a suitable roof top antenna to the **TV input** on the WinTV-soloHD / dualHD stick.

To receive digital terrestrial TV, you should ensure you are located in an area that supports Digital Terrestrial TV by visiting one of these websites:

- | | |
|---|-----------------------------------|
| Denmark: www.digi-tv.dk | Finland: www.digitv.fi |
| France: www.csa.fr | Germany: www.ueberallfernsehen.de |
| Poland: www.emitel.pl | United Kingdom: www.dtg.org.uk |
| Sweden: www.teracom.se | Switzerland: www.broadcast.ch |
| Singapore: www17.mediacorp.sg/digitaltv | |

Note: When using an indoor antenna with built-in amplifier, the power for the amplifier needs to come from a separate power supply.

Step 3: Install the Drivers and Application Software

Note: Please disable your antivirus software for the duration of the software installation.

Note: An Internet connection is required for software activation.

Insert the WinTV installation CD ROM. You should then see the Hauppauge autorun menu.

If the menu does not appear, click on Start, then Computer, in the Explorer window double-click your CD / DVD drive, then double-click on the Setup file). From this menu select your language.

Click the button **Step 1: Install Drivers**.



2

A blue screen will open and begin installing the drivers for your WinTV. When this is finished, click the button labeled **Drivers have been updated Successfully. <<click to exit>>**.

Click the button labeled **Step 2: Install WinTV**. When you are asked to enter the serial number, enter the serial number from the sleeve of the CD ROM.

Once complete, click OK, then **Exit**. After the installation you will find a **WinTV 8** icon on your desktop and a **Hauppauge WinTV** folder in the Windows Start menu.



Step 4: Start WinTV v8 and Scan for Channels

To start the WinTV v8 application, double-click on the WinTV 8 icon on your desktop.

On the first start of the application, the Device Setup Wizard will appear.

Set the checkmark for the type of TV signal that is connected to the WinTV stick:

- If you have connected an Antenna for digital terrestrial TV, select **"Digital DVB-T/T2"**.

- If the cable from your digital cable TV feed is connected, select **"Digital DVB-C"**.

Click **Next**.

Select your **Country** and **Region**. If your region is not listed, choose the default selection of the region.

Click **Next** to start the scanning process.

Channels will be found and listed during the scan.

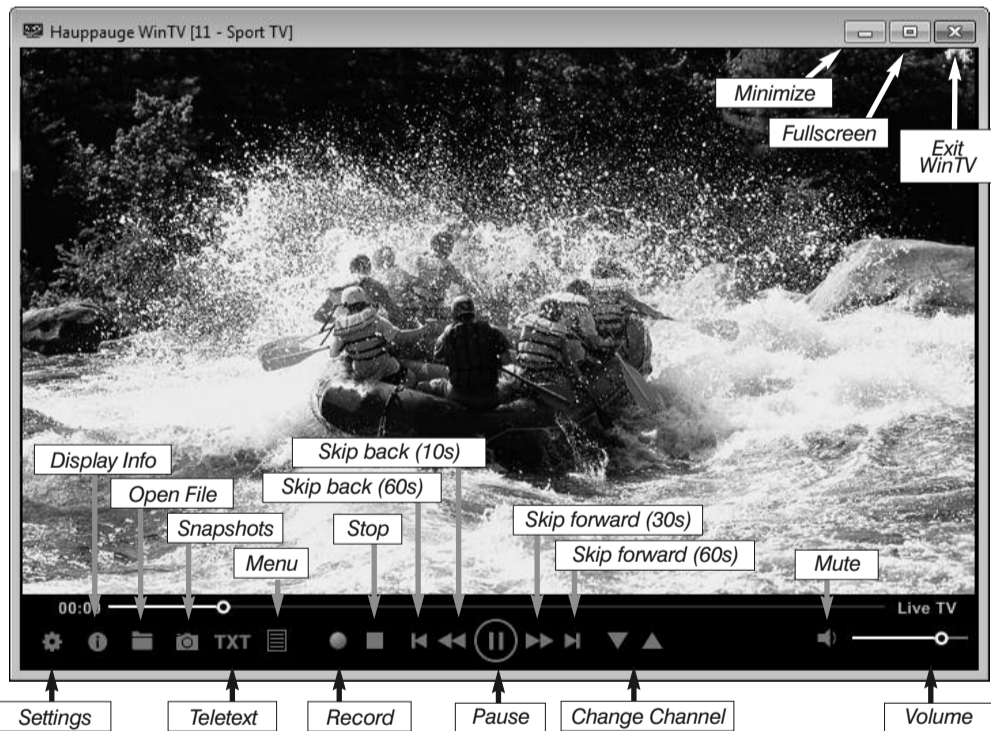
Once this is complete, click **Next** to finish.



3

Step 5: Using WinTV v8

WinTV v8 has many features, including live TV, recording and pausing live TV, a TV scheduler and a video player where you can playback recordings in a window or full screen.



The Context Menu

Right-click inside the TV window or click on the menu button to display the Context Menu. The following options are available.

Option «Find Channel»

This brings up the Channel List. Click on a channel entry to select this channel for watching. To filter the channel list, type in a channel name (or a part of the name). Click on the Pin-Button to permanently show the channel list. The channel list will also be displayed if you just enter any character (a - z) in live TV mode.



Option «Audio Stream»

If the current TV broadcast offers more than one audio stream / language, you can select the other stream / language here.

Option «Subtitles»

Select this option to display subtitles. If subtitles according to the DVB standard are available, the On Screen Display message "Subtitles: On" is shown for a few seconds, and subtitles are displayed. If subtitles are not available, the OSD message does not appear. To turn off subtitles, select the "Show Subtitles" option again. Also, when playing back a .ts recording, subtitles can be enabled in the same way.

Option «View Mode»

The sub options **Normal**, **No Title** and **Fullscreen** are available. In the Normal view all control elements and buttons are visible. In the **No Title** view only the TV image is shown. In the Fullscreen view the TV image fills the whole screen. You can also switch between these views by double clicking inside the TV window, or by pressing <Ctrl> W on the keyboard. Position and size of the application window for the **Normal** and **No Title** views are saved separately.

4

Option «Stay On Top»

If enabled, the WinTV application window will remain in view over any other application windows, even if it is not selected. To turn on, select "Stay On Top". To turn off, select this option again.

Option «Teletext»

Displays teletext pages on top of the TV image, if available.

Option «TV Guide» (only for Digital-TV)

Many digital TV channels transmit Electronic Program Guide information (EPG). This information is collected and displayed in the TV Guide window. Click a program title with your mouse to see more details about the entry. To record a program, click on **Record** in the details view. The scheduled recording is added to the Scheduler window. To rescan all frequencies for TV Guide information, click on **Update EPG**.



Option «Scheduler»

The Scheduler allows you to record a TV program at a certain date and time on the specified channel. It lists all scheduled recordings added by the TV Guide as well as any manual recordings that have been set.

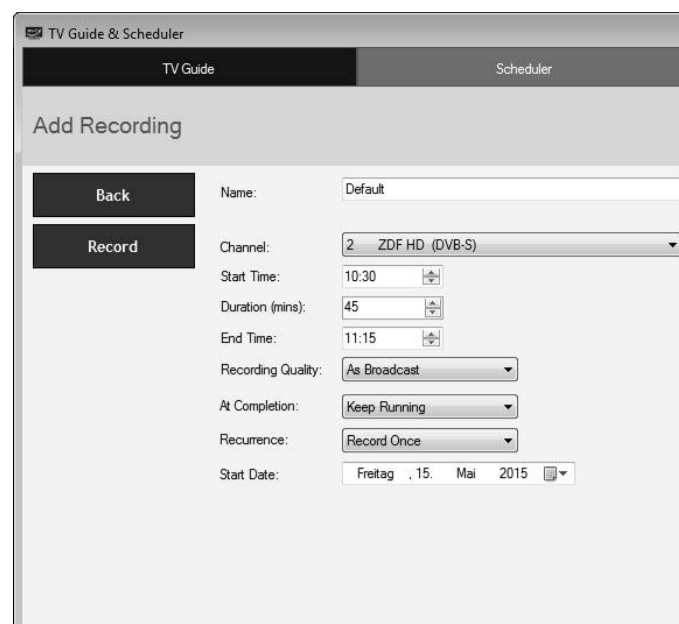
From here you can **Edit** or **Cancel** (delete) existing schedule entries.



5

To schedule a new recording, click on the **Add** button. You will need to select the channel, set the start time, duration etc. and confirm with a click on the **Record** button.

Note: *The WinTV application does not have to be running for a scheduled recording to work, but your PC will need to be either turned on, in Standby or in Hibernate mode. All scheduled recordings are performed in the background by the task "WinTVRec.exe". If a recording is started while you are watching live TV, WinTV will display the TV program being recorded.*



Settings

Click the **Settings** button to open the WinTV settings window.

General: Select the language and the preferred Audio and subtitle languages. You can also specify the video renderer to be used and the TV shape.

Capture: Specify where the recordings, pause files and snapshots will be stored.

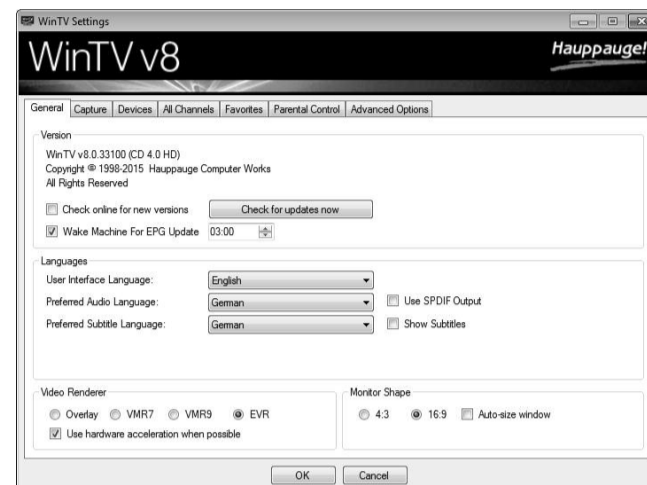
Devices: To configure the WinTV tuner, select the device you wish to configure from the list and click on **Tuner Setup** to scan for new channels.

All Channels: You can enable or disable channels with the select box in the first column. The right click context menu allows you to select all channels, to delete the selected channel(s), to watch the selected channel or to display details about the channel.

Favorites: Here you can define groups of your favorite channels.

Advanced Options: From this menu you have options for:

- Automatically starting TV when WinTV v8 opens
- Disable the Now/Next channel information
- Disable any On Screen Display graphics
- Auto convert the standard .TS recordings to the .mpg format (SDTV only)
- Enable Game Mode to in case you have connected a game console to the A/V input, and want to eliminate the delay when showing live video.



6

The **Logs** section allows you to enable extended logging and to open the Logs folder.

The **Decoders** section allows you to test and use third party video/audio decoders. (The use of third party decoders is an unsupported feature.)

WinTV Keyboard Commands

| | | | |
|-------------------|-------------|---------------------|-------------|
| Next Channel | = Plus (+) | Live (now) | = Ctrl + C |
| Previous Channel | = Minus (-) | Full Screen | = Ctrl + W |
| Increase Volume | = Page up | Subtitles on / off | = Ctrl + S |
| Decrease Volume | = Page down | WinTV Settings | = Ctrl + I |
| Show Channel List | = Ctrl + L | Start TV | = Alt + T |
| Mute | = Ctrl + M | Last Channel | = Alt + P |
| Display Info | = Ctrl + O | Start Recording | = Alt + R |
| Stream Details | = Ctrl + D | Stop | = Alt + S |
| Teletext | = Ctrl + T | Open File | = Alt + F |
| Pause Video | = Ctrl + Q | Make Snapshot | = Space Bar |
| Play | = Ctrl + P | Change Aspect Ratio | = Ctrl + A |
| Skip Ahead | = Ctrl + F | Exit Full Screen | = Esc |
| Skip Back | = Ctrl + R | | |

Using the Dual Tuner Function on WinTV-dualHD

How to use the dual tuner on the WinTV-dualHD stick?

1. Recording two overlapping TV programmes

You can schedule two overlapping TV shows from the TV Guide or manually.

2. Watch one live program while another program is recorded

You can watch one live program in WinTV v8 and continue watching, when a scheduled recording takes place. The second, free tuner is used automatically for the recording.

3. Watch two programs at the same time

You can run two instances of the WinTV application and watch live TV in each window. For this, start the first WinTV window as usual from the WinTV8 shortcut icon on your desktop. Start the second WinTV window using the shortcut "Open new WinTV window" in the Start menu in "Hauppauge WinTV" / "Advanced Options" (Windows 7) or in the "Advanced Options" folder on your desktop (Windows 8 / Windows 10).

Infrared Remote Control (some models only)

Insert the battery into the remote control, following the correct polarity.

On start up of Windows, the IR software (ir.exe) is loaded from the Startup folder ("AutoStart IR"). When ir.exe is loaded, you see a black remote control icon in the system tray area on the Windows task bar (next to the clock).

Hints on Using the Remote Control

- The IR sensor is built into the WinTV stick, and located on its side. So when using the remote control, point it towards the WinTV stick.

- The WinTV application only responds to the remote control if it is the active window.

- In case the WinTV stick is not connected to the USB port during Windows start up, the IR software will not be loaded and the remote control will not function. To make it work, after connecting the WinTV stick, run the "Restart IR" shortcut in the Startmenü or on Windows 8.1 in the "Advanced Options" folder on your Desktop.




7

Further Information

Checking the Device Driver

To check if the device driver is installed correctly: In the **Control Panel** click **System** and select **Device Manager**. In the category „Sound, video and game controllers“ you should see a **Hauppauge WinTV-soloHD** or **Hauppauge WinTV-dualHD** entry without any exclamation mark.

How Can I Rerun the Channel Scan?

To scan for channels again, in the main WinTV window click on the gear icon , then select the "Devices" tab, click on the WinTV device entry and click on "Tuner Setup".

Manual Channel Scan

To scan a single DVB-T or DVB-C frequency, in the Device Setup Wizard's drop down list for the *Country*, select "Manual Scan". In the *Region* selector you can then choose a frequency to scan.

Digital Terrestrial TV Reception (DVB-T/T2) in the UK

Please check your DVB-T reception, from the DTG (UK) website:

www.dtg.org.uk (Search for "coverage checker")

For the best DVB-T reception we recommend using a roof top antenna. When using an indoor antenna with built-in amplifier, the power for the amplifier needs to come from a separate power supply.

Display Problems

If there are problems with the TV display, they can possibly be rectified by changing the video renderer options. Click on the Settings button in WinTV and select the "General" tab, then select a different video renderer (e.g. VMR9). For current PC systems the recommended Video Renderer setting is **EVR** or **VMR9**, but not **Overlay**. Changes take effect after restarting the WinTV application.

Software Updates and FAQ

In the **Support** section on the Hauppauge website you can find the latest software updates for your product, answers to frequently asked questions and other up to date information.

United Kingdom: www.hauppauge.co.uk

Singapore: www.hauppauge.com.sg

Waste Electrical and Electronic Equipment (WEEE): Das Gerät darf nicht mit dem Siedlungsabfall (Hausmüll) entsorgt werden. Dieses Gerät ist entsprechend der europäischen Richtlinie 2002/96/EG über Elektro- und Elektronik-Altgeräte (Waste Electrical and Electronic Equipment - WEEE) gekennzeichnet. Die Richtlinie gibt den Rahmen für eine EU-weit gültige Rücknahme und Verwertung der Altgeräte vor. Für die Rückgabe Ihres Altgeräts nutzen Sie bitte die Ihnen zur Verfügung stehenden Rückgabe- und Sammelsysteme.

FCC Statement FCC ID: H90WINTV CE Statement: This equipment has been tested and complies with EN 55013, EN 55020 and IEC 801-3 part 3 standards. **CAUTION:** Changes or modifications not expressly approved by the party responsible for compliance to the FCC Rules could void the user's authority to operate the equipment. Supplementary Television Broadcasting Receiving Apparatus - Appareils supplémentaires de réception de télévision, Canada. Nordic note: Ma kun tilkøples kabel-TV nett via galvanisk isolator.

8